

PR997 'Essential' Long Sleeve Workwear Polo Shirt

Description

A long sleeve durable workwear polo shirt suitable for staff working across many industries. Designed with extra body length, this heavyweight unisex polo shirt is styled with a ribbed knit collar and a three button placket and makes for smart-casual workwear option. A great uniform solution for those in labour intensive or food processing environments due to the built in-antimicrobial fabric protection and high wash capability.

Product Features:

- Heavyweight and durable long sleeve polo shirt.
- Ribbed knit collar and two button placket.
- Antimicrobial fabric protection to prevent degradation.

Available In:

S, M, L, XL, 2XL, 3XL, 4XL

Certifications:

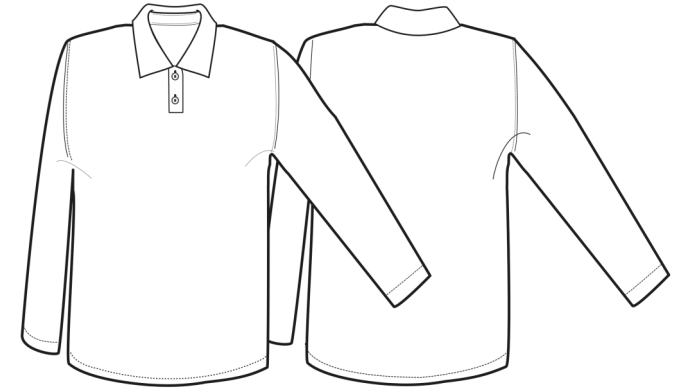


Colours:

Colour	Pantone	C	M	Y	K
Black	Black c	0	0	0	100
Navy	533c	95	72	15	67

Fabric:

65% Polyester, 35% Cotton
powered by HeiQ Viroblock
200gsm.



Suggested Decoration:

Screen Print, Transfer Print, Embroidery

Country of Origin:

Bangladesh

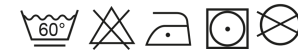
Commodity Code:

6105201000

Features:



Wash Care:



Carton Information:

Sizes	Carton	Pack	SKU's	Weight	Dimensions
All Sizes	36	6	14	13.5kg	54cm x 43cm x 38cm

Garment Sizes:

Call Size	S	M	L	XL	2XL	3XL	4XL
Chest to fit"	35	38	41	44	47	50	53
Chest to fit cm	89	96	104	112	119	122	134
Back Length cm	69	71	73	75	77	79	81