

## PR632 Women's Coolchecker® Plus Pique Polo

### Description

The next generation in performance polo shirts, this women's style uses a four channel yarn to give exceptional moisture management and wicking properties. Antimicrobial coating will prevent colour degradation and odours. A modern and stylish piece of everyday workwear that will make for a smart and professional looking workforce.

### Product Features:

- Ribbed knit collar and cuffs
- Three button placket, self-coloured
- Double pique knit
- Silvadur™ technology for antimicrobial properties
- Snag, crease and shrink resistant

### Available In:

XS, S, M, L, XL, 2XL, \*3XL, \*4XL

### Certifications:



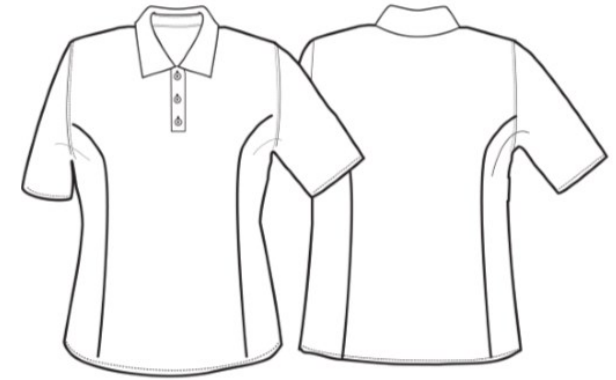
### Colours:

Colour	Pantone	C	M	Y	K
Black*	Black c	0	0	0	100
Burgundy	209c	20	97	40	58
Bottle	7484c	91	14	78	60
Dark Grey	425c	52	29	30	78
Kelly	7482c	90	0	93	0
Light Blue	2717c	34	15	0	0
Navy *	533c	95	72	15	67
Orange	172c	0	73	87	0
Purple	7447c	77	85	6	18
Red	201c	7	100	68	32

Colour	Pantone	C	M	Y	K
Royal	7687c	100	78	0	18
Sapphire	2144c	95	53	0	0
Silver	429c	21	11	9	23
Turquoise	7703c	79	2	10	11
White	White	0	0	0	0

### Fabric:

100% Polyester double pique, 185gsm



### Suggested Decoration:

Screen Print, Transfer Print, Embroidery

### Country of Origin:

Bangladesh

### Commodity Code:

6106 20 1000

### Features:



### Wash Care:



### Carton Information:

Sizes	Carton	Pack	SKU's	Carton Weight	Carton Dimensions
All sizes	36	6	94	13k.6g approx.	54cm x 43cm x 38cm

### Garment Sizes:

Size	8	10	12	14	16	18	20*	22*
Bust to fit"	33	35	37	39	41	43	45	47
Bust to fit cm	84	89	94	99	104	109	114	119
Bust actual cm	88	94	100	106	114	122	130	138
Call size	XS	S	M	L	XL	2XL	3XL	4XL
Back length cm	62	64	66	68	70	72	74	76