

PR303 Women's Long Sleeve 'Recyclight' Poplin Shirt

Description

For those who are conscious of their material choices, our best-selling women's poplin shirt is now available in a recycled polyester-cotton blend. This shirt boasts the same great easycare properties as our classic poplin, but is constructed in a heavier weight and has a more fitted shape. Soft collar styling, back darts and curved hem-line enhance the feminine shape. Double-buttoned cuff and a single-button sleeve guard to facilitate a roll-back option. A great everyday women's work shirt.

Product Features:

- Soft collar styling
- Double-button cuff
- Sleeve guard with single button
- Back darts for feminine fit
- Curved hem-line
- Contains recycled polyester

Available In:

XS, S, M, L, XL, 2XL, 3XL, 4XL

Certifications:

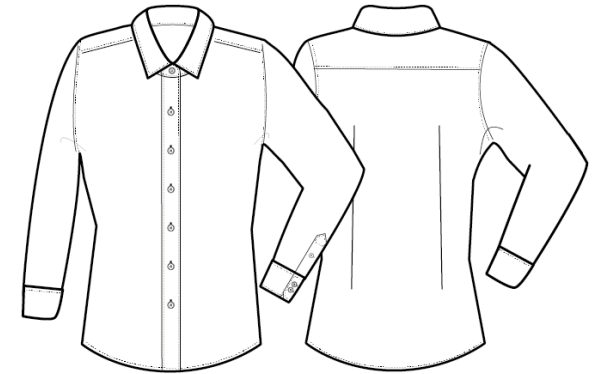


Colours:

Colour	Pantone	C	M	Y	K
Black	Black C	0	0	0	100
White	White	0	0	0	0

Fabric:

65% Recycled Polyester, 35% Cotton, 115gsm.



Suggested Decoration:

Screen Print, Transfer Print, Embroidery

Country of Origin:

Bangladesh

Commodity Code:

6206400000

Features:



Wash Care:



Carton Information:

Sizes	Carton	Pack	SKU's	Carton Weight	Carton Dimensions
All sizes	24	6	16	7.14kg	56cm x 36cm x 39cm

Garment Sizes:

Size	8	10	12	14	16	18	20	22
Call size	XS	S	M	L	XL	2XL	3XL	4XL
Chest to fit"	33	35	37	39	41	43	45	47
Chest to fit cm	84	89	94	99	104	109	114	119
Chest actual cm	93	98	103	108	113	118	124	129
Back length cm	66	67	68	69	70	71	72	73