

PR300 Women's Long Sleeve Poplin Blouse

Description

A stylish long sleeve ladies blouse available in 17 colours. This blouse offers the wearer a semi-fitted feminine styling with a soft collar, bust, back darts and a rounded bottom hem.

Product Features:

- Soft collar styling
- Rounded hem
- Feminine fit style with bust and back darts
- Two button adjustable cuff

Available In:

6, 8, 10, 12, 14, 16, 18, 20, 22, 24, 26, 28*, 30*

Certifications:



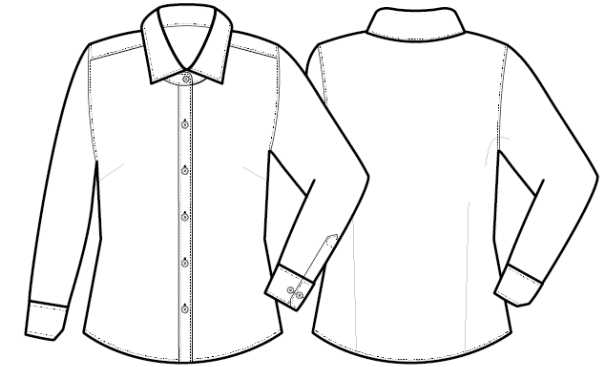
Colours:

Colour	Pantone	C	M	Y	K
Black*	Black c	0	0	0	100
Bottle	7736c	56	0	58	78
Burgundy*	209c	20	97	40	58
Dark Grey*	425c	52	29	30	78
Light Blue*	2707c	20	6	0	0
Khaki	7536	11	13	30	32
Mid Blue*	2135c	62	39	0	0
Navy *	533c	95	72	15	67
Pink	670c	1	17	0	0
Hot Pink	215c	66	100	26	24
Purple *	7447c	77	85	6	18
Red *	201c	7	100	68	32

Colour	Pantone	C	M	Y	K
Royal	7686c	100	73	0	0
Silver *	429c	21	11	9	23
Steel *	Cool grey 11c	44	34	22	77
Turquoise	7703c	79	2	10	11
White *	White	0	0	0	0

Fabric:

65% Polyester, 35% Cotton Poplin, 105gsm.
White: 115gsm.



Suggested Decoration:

Screen Print, Transfer Print, Embroidery

Country of Origin:

Bangladesh

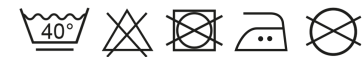
Commodity Code:

6206400000

Features:



Wash Care:



Carton Information:

Sizes	Carton	Pack	SKU's	Carton Weight	Carton Dimensions
6 - 20	36	6	136	8.3kg	58cm x 38cm x 19cm
22 - 26	12	3	51	3.7kg	58cm x 38cm x 15cm
28 - 30	6	2	22	3.7kg	58cm x 38cm x 15cm

Garment Sizes:

Size	6	8	10	12	14	16	18	20	22	24	26	28	30
Bust to fit"	31	33	35	37	39	41	43	45	47	49	51	53	55
Bust to fit cm	79	84	89	94	99	104	109	114	119	124	129	134	139
Bust actual cm	89	94	99	104	109	115	119	124	129	134	139	144	149
Call size	2XS	XS	S	M	L	XL	2XL	3XL	4XL	5XL	6XL	7XL	8XL
Back length cm	62	63	64	65	66	67	68	69	71	73	75	75	75