

PR203 Men's Long Sleeve 'Recyclight' Poplin Shirt

Description:

For those who are conscious of their material choices, our best-selling men's poplin shirt is now available in a recycled polyester-cotton blend. This shirt boasts the same great easycare properties as our classic poplin but is constructed in a heavier weight and has a more fitted shape. A stiffened formal collar with top button fastening makes for a smart shirt with the option to wear open-collared for a more relaxed look. Double buttoned cuff with cufflink hole and a single button sleeve guard to facilitate a roll-back option. Constructed with back darts to enhance the fit and shape. A great everyday men's work shirt.

Product Features:

- Stiffened formal collar
- Back yoke and darts for shape
- Double-button cuff with cufflink hole
- Sleeve guard with single button
- Contains recycled polyester

Available In:

S, M, L, XL, 2XL, 3XL, 4XL, 5XL

Certifications:



Sedex Member

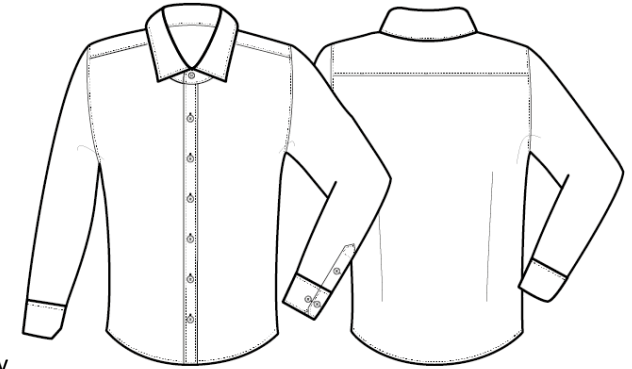


Colours:

| Colour | Pantone | C | M | Y | K |
|--------|---------|---|---|---|-----|
| Black | Black C | 0 | 0 | 0 | 100 |
| White | White | 0 | 0 | 0 | 0 |

Fabric:

65% Recycled Polyester, 35% Cotton, 115gsm.



Suggested Decoration:

Screen Print, Transfer Print, Embroidery

Country of Origin:

Bangladesh

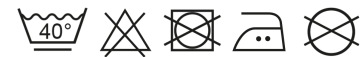
Commodity Code:

6205300000

Features:



Wash Care:



Carton Information:

| Sizes | Carton | Pack | SKU's | Carton Weight | Carton Dimensions |
|-----------|--------|------|-------|---------------|--------------------|
| All sizes | 24 | 6 | 16 | 11.13kg | 56cm x 36cm x 39cm |

Garment Sizes:

| Size | S | M | L | XL | 2XL | 3XL | 4XL | 5XL |
|-----------------|-----|-----|-----|-----|-----|-----|-----|-----|
| Chest to fit" | 34 | 38 | 42 | 46 | 50 | 54 | 58 | 62 |
| Chest to fit cm | 87 | 96 | 107 | 117 | 126 | 136 | 146 | 156 |
| Chest actual cm | 102 | 112 | 122 | 132 | 142 | 152 | 162 | 172 |
| Back length cm | 81 | 82 | 83 | 84 | 85 | 86 | 87 | 88 |