

# JustCool®

## AWDis

Just Cool Product Specification 2026

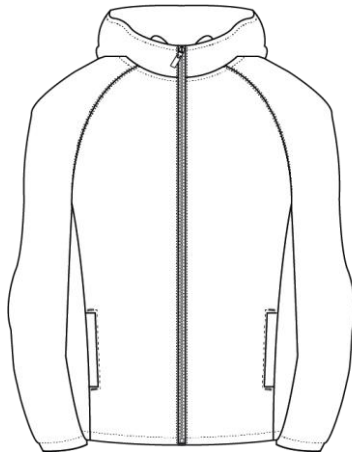
Issue 1

**Style Code:**

JC282

**Style Name:**

Active Track Jacket



**Retail Copy:**

Our Active Track jacket uses a lightweight, quick dry fabric and has great functional details like zipped pockets, hood toggles and hem toggles to allow maximum performance. Pair this with our Active Track Pant!

**Colours:**

Jet Black

**CMYK References**

73/67/61/67

**Sizes**

XS-3XL

**Sizes to fit**

XS	35"-36"
S	37"-39"
M	39"-41"
L	41" - 43"
XL	43"-45"
XXL	45"- 48"
3XL	48"- 50"

**Fabric Name:**

N/A

**Fabric Content**

60% Polyester, 40% Recycled Polyester

**Fabric Weight:**

110gsm

Carton Qty:	20
Pack Qty:	5
Key Features:	Relaxed fit Wicking quick dry fabric Raglan sleeves Elasticated cuffs 3 panel Hood Zip front pockets Hood adjustment toggles Hem adjustment toggles Tear Away Label

Icons:



Wash Care Instructions

